



川源(中国)机械有限公司
GSD Industrial Co., Ltd.



NVSS

管网叠压(无负压)变频
供水设备

**NVSS non-negative pressure superposed
water supply equipment**

NVSS 管网叠压(无负压)变频供水设备

NVSS non-negative pressure superposed water supply equipment



简介 General

无负压供水设备，是一种理想的节能供水设备，它是一种直接能与自来水管网连接，对自来水管网不会产生任何副作用的二次供水设备。

在市政管网压力的基础上直接叠压供水，节约能源，并且还具有全封闭、无污染、占地最小、安装快捷、运行可靠、维护方便等优点。在原有的VAS变频给水设备基础上研制开发出新一代NVSS系列管网叠压（无负压）变频给水设备。

Non-negative pressure superposed water supply equipment is a type of energy-saving water supply equipment, which is a kind of secondary water supply equipment, directly connected with water supply network without any side-effect on the pipe network.

It is energy-saving for pressure-superposed water supply on the basis of municipal pipe network pressure, and there are advantages such as fully closed, pollution-free, smallest floorage, fast installation, reliable operation and convenient maintenance. A new generation of NVSS non-negative pressure superposed water supply equipment is researched and developed on the basis of original VAS variable frequency water supply equipment.

特点 Features

- 节省投资：无需修建蓄水池或水箱，也不需要大型气压罐。
- 高效节能：充分利用市政管网的供水压力，不产生负压，与传统供水设备相比节能可达30%-90%，运行成本低，节能效果显著。
- 卫生无污染：供水系统从自来水管网至用户水龙头为全密封结构，污染物不会进入系统，水体不与空气接触，过流部件均采用食品级不锈钢制作，不对水质产生污染。
- 管理维护简便：设备有全自动智能化控制器控制，自行根据用户的用水量和管网的自来水压力进行调节，完善的故障检测、诊断技术和报警提醒使得设备的管理维护异常简单，可实现无人值守。
- 保护功能齐全：设备具有完美的过载、短路、过压、欠压、缺相、水源缺水等自动保护功能，在异常情况下能进行信号报警、自检、故障判断等。

- Investment-saving: there is no need of building reservoir or water tank, or large-scale pressure tank.
- High energy-efficiency: the device fully takes the advantages of the water supply pressure of municipal pipe network and makes up for pressure needed without any negative pressure. Compared to traditional water supply equipment, its energy conservation can reach up to 30%-90%, and the operating cost is low, with an outstanding energy-saving effect.
- Healthy and non-pollution: the water supply system is a fully sealed structure from water pipe network to users, so pollutant will not enter the system, and there is no contact with air; the flow passage components are all made of food-grade stainless steel with no contamination to water.
- Easy for management and maintenance: it is equipped with an automatic intelligent controller, which will be automatically adjusted according to users' water consumption and water pressure of pipe network. The perfect fault detection, diagnostic technique and alarming alert make the management and maintenance extremely easy, and unattended operation is achievable.
- Complete defensive function: the device has perfect automatic defensive function, such as overload, over-voltage, under-voltage, phase loss and water shortage at source, which can conduct signal alarm, self-inspection and failure predication in abnormal situation.

适应范围

- 各种建筑群，如大厦、办公楼、住宅小区、别墅等生活用水。
- 企事业单位、宾馆、写字楼、商场、浴室、医院、学校、机场等日常用水。
- 工厂、工矿的生产用水等原有给水系统的供水设备改造。

功能简介

- **叠压供水功能**
设备运行时按系统要求利用管网原有压力叠压增压，差多少，补多少。
- **自动切换、互为备用功能**
为了保证每台泵都有足够的休息时间，系统设置了定时切换功能（时间可调），工作泵工作时间达到设定值后自动切换到下一台工作，依次循环，保证每台泵的工作时间一致，同时当工作泵出现故障时，备用泵自动投入运行，保证供水不受影响。
- **启停功能**
设备具有手动、自动等控制功能。
- **保护功能**
设备具有过压、欠压、缺相、短路、过流等故障报警及自动保护功能。
- **超压保护功能**
设备运行过程中，如果用户管网系统出现异常的压力超高现象，系统自动停止运行并报警，超压故障解除后自动恢复运行。
- **显示功能**
系统设有电源、电流、电压、启、停状态显示、故障声、光报警等功能。
- **人机对话功能**
设备可根据要求配置触摸式人机界面，动态显示，将人机对话功能简单化。
- **本地集中监控**
设备可根据要求配置各种通讯接口或局域网等，供用户实现数据交换。

Range of application

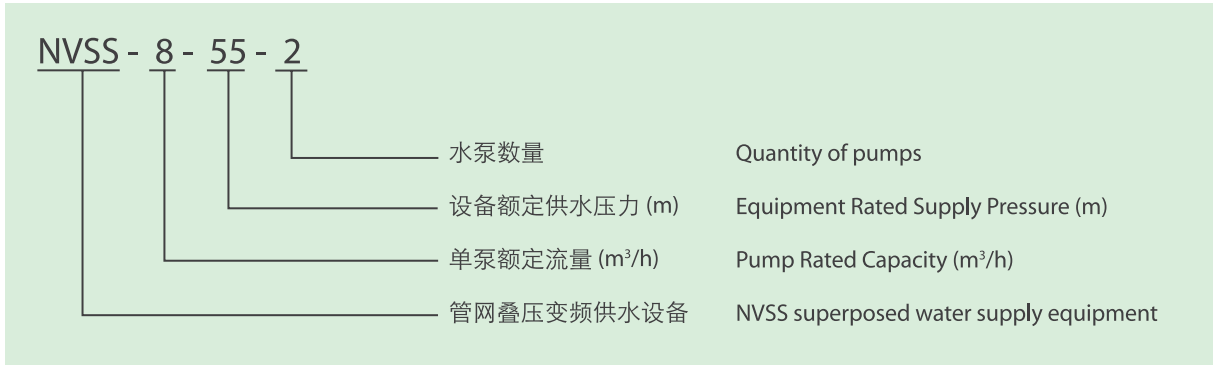
Domestic water consumption of all kinds of building groups, such as mansion, business building, residence community, villa, etc.
Daily water consumption of enterprises and public institutions, hotels, office buildings, markets, bathrooms, hospitals, schools and airports, etc.
Transformation of water supply equipment of original water supply system for production water consumption of factories and mining industries.

Range of application

- **Pressure-superposed water supply**
During operation, the device will overlay pressure and be supercharged with no matter how much pressure needed according to system requirements.
- **Automatic switchover and standby to each other**
To ensure enough intermissions of each pump, the system is set up with timing function for switchover which is adjustable. The working pump will automatically switch to the next one when its working time is reaching the set value. By recycling in turn, the consistency of working time of each pump will be ensured. When the working pump is breaking down, the spare pump will be put into operation, to ensure that the water supply is not affected.
- **Start and stop function**
The device is equipped with manual operation and automatic control function.
- **Protection function**
The device is equipped with failure warning function, such as over-voltage, under-voltage, phase loss, short circuit, over-current, and automatic protection function.
- **Over-voltage protection function**
During the process of operation, if any phenomenon such as unusual over-pressure in users' pipe network system, the system will stop automatically and give out an alarm, and will return to operation after trouble shooting of over-pressure.
- **Display function**
The system is equipped with functions such as status display of power supply, electric current, voltage, start and stop, audible and visual alarm of malfunction.
- **Man-machine interaction function**
The device can be equipped with touch human-computer interface and dynamic display as required, which will simplify the function of man-machine interaction.
- **Local centralized monitoring**
The device can be equipped with all kinds of communication interfaces and local area networks as required for users to realize data exchange.



型号说明 Type description



例如：NVSS8-55-2管网叠压变频供水设备，配备2台水泵，设备额定供水流量为8*2=16 m³/h，额定供水压力为55m。
 Illustrations: NVSS8-55-2 equips two pumps. Equipment rated capacity is 8*2=16m³/h, and rated supply pressure is 55m.

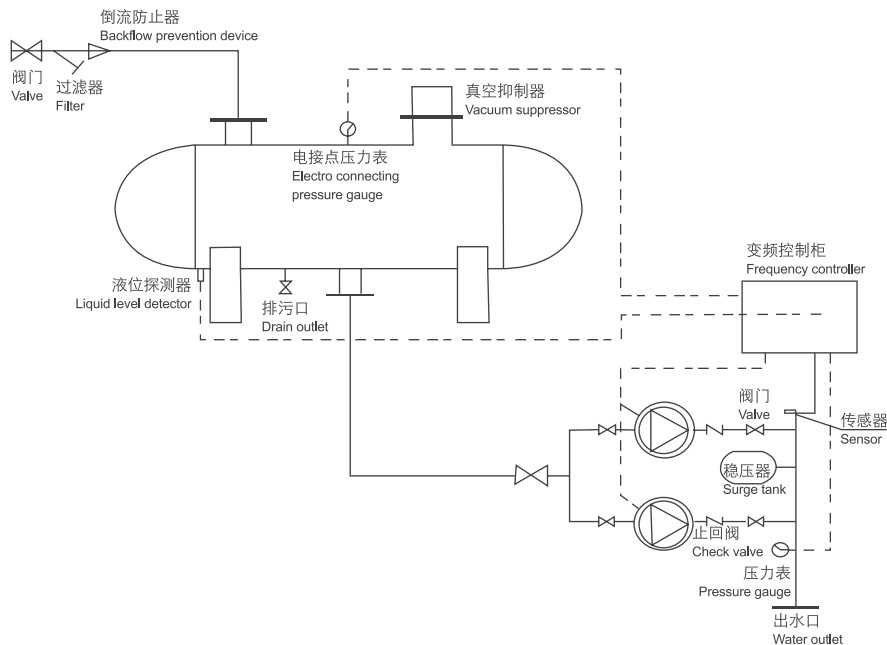
工作原理

在市政管网供水充足时，设备正常工作后，自来水进入不锈钢稳流调节罐，设备叠加市政管网的压力进行增压供水。系统通过压力传感器将压力信号传送至控制系统，系统根据用水量的大小变频调节水泵转速或加减水泵数量。同时控制系统随时监控市政管网压力，若市政管网供水不足时，调节罐内的水作为设备补充水源，同时通过真空抑制器来避免设备产生负压，保护管网压力。市政管网压力恢复后，设备恢复原来的工作状态。

Operating principle

When the municipal pipe network is in sufficient water supply and after the device is in normal operation, tap water will enter stainless steady flow regulating tank, and the device will overlay pressure of municipal pipe network and proceed a supercharged water supply. The system will transmit the pressure signal to control system through pressure sensor, and the system will regulate rotational speed of water pump with variable frequency or increase or decrease pump number, according to water consumption volume. In the meantime, the control system will monitor pressure of municipal pipe network, and if its water supply is insufficient, it will regulate water in tank as supplement of water source, and avoid negative pressure in device through vacuum suppressor to protect pipe network pressure. After the recovery of municipal pipe network pressure, the device will recover its original working condition.

NVSS管网叠压系统原理图 NVSS System Schematic



性能参数 Performance parameters

(2 Pumps)

设备型号 Type	系统流量 Capacity (m ³ /h)	扬程 Head (m)	水泵 Water pump			稳流罐 Steady flow tank	稳压罐 The surge tank				
			型号 Type	功率 Power	台数 Stations						
NVSS2-15-2	4	15	SMVN2-2	0.37	2	Ø600*1300	12L				
NVSS2-22-2		22	SMVN2-3	0.37							
NVSS2-30-2		30	SMVN2-4	0.55							
NVSS2-37-2		37	SMVN2-5	0.55							
NVSS2-45-2		45	SMVN2-6	0.75							
NVSS2-52-2		52	SMVN2-7	0.75							
NVSS2-59-2		59	SMVN2-8	1.1							
NVSS2-67-2		67	SMVN2-9	1.1							
NVSS2-74-2		74	SMVN2-10	1.1							
NVSS2-82-2		82	SMVN2-11	1.1							
NVSS2-90-2		90	SMVN2-12	1.5							
NVSS2-98-2		98	SMVN2-13	1.5							
NVSS2-105-2		105	SMVN2-14	1.5							
NVSS2-112-2		112	SMVN2-15	1.5							
NVSS2-120-2		120	SMVN2-16	2.2							
NVSS2-128-2		128	SMVN2-17	2.2							
NVSS2-136-2	136	SMVN2-18	2.2								
NVSS4-15-2	8	15	SMVN4-2	0.37	2	Ø600*1300	12L				
NVSS4-24-2		24	SMVN4-3	0.55							
NVSS4-32-2		32	SMVN4-4	0.75							
NVSS4-40-2		40	SMVN4-5	1.1							
NVSS4-48-2		48	SMVN4-6	1.1							
NVSS4-56-2		56	SMVN4-7	1.5							
NVSS4-64-2		64	SMVN4-8	1.5							
NVSS4-72-2		72	SMVN4-9	2.2							
NVSS4-81-2		81	SMVN4-10	2.2							
NVSS4-88-2		88	SMVN4-11	2.2							
NVSS4-95-2		95	SMVN4-12	2.2							
NVSS4-103-2		103	SMVN4-13	3							
NVSS4-112-2		112	SMVN4-14	3							
NVSS4-120-2		120	SMVN4-15	3							
NVSS4-129-2		129	SMVN4-16	3							
NVSS4-137-2		137	SMVN4-17	4							
NVSS8-18-2	16	18	SMVN8-2	0.75	2	Ø600*1300	12L				
NVSS8-28-2		28	SMVN8-3	1.1							
NVSS8-37-2		37	SMVN8-4	1.5							
NVSS8-46-2		46	SMVN8-5	2.2							
NVSS8-55-2		55	SMVN8-6	2.2							
NVSS8-64-2		64	SMVN8-7	3							
NVSS8-74-2		74	SMVN8-8	3							
NVSS8-83-2		83	SMVN8-9	4							
NVSS8-92-2		92	SMVN8-10	4							
NVSS8-101-2		101	SMVN8-11	4							
NVSS8-110-2		110	SMVN8-12	4							
NVSS8-119-2		119	SMVN8-13	5.5							
NVSS8-129-2		129	SMVN8-14	5.5							
NVSS8-138-2		138	SMVN8-15	5.5							
NVSS16-23-2		32	23	SMVN16-2				2.2	2	Ø600*1300	18L
NVSS16-35-2			35	SMVN16-3				3			
NVSS16-47-2	47		SMVN16-4	4							
NVSS16-59-2	59		SMVN16-5	5.5							
NVSS16-70-2	70		SMVN16-6	5.5							



性能参数 Performance parameters

(2 Pumps)

设备型号 Type	系统流量 Capacity (m ³ /h)	扬程 Head (m)	水泵 Water pump			稳流罐 Steady flow tank	稳压罐 The surge tank
			型号 Type	功率 Power	台数 Stations		
NVSS16-82-2	32	82	SMVN16-7	7.5	2	Ø600*1300	18L
NVSS16-94-2		94	SMVN16-8	7.5			
NVSS16-106-2		106	SMVN16-9	11			
NVSS16-118-2		118	SMVN16-10	11			
NVSS16-129-2		129	SMVN16-11	11			
NVSS20-9-2	40	9	SMVN20-1	1.1	2	Ø800*1500	18L
NVSS20-22-2		22	SMVN20-2	2.2			
NVSS20-35-2		35	SMVN20-3	4			
NVSS20-47-2		47	SMVN20-4	5.5			
NVSS20-59-2		59	SMVN20-5	5.5			
NVSS20-72-2		72	SMVN20-6	7.5			
NVSS20-83-2		83	SMVN20-7	7.5			
NVSS20-97-2		97	SMVN20-8	11			
NVSS20-120-2		120	SMVN20-10	11			
NVSS32-10-2	64	10	SMVN32-1-1	1.5	2	Ø800*1500	24L
NVSS32-13-2		13	SMVN32-1	2.2			
NVSS32-22-2		22	SMVN32-2-2	3			
NVSS32-28-2		28	SMVN32-2	4			
NVSS32-36-2		36	SMVN32-3-2	5.5			
NVSS32-42-2		42	SMVN32-3	5.5			
NVSS32-50-2		50	SMVN32-4-2	7.5			
NVSS32-56-2		56	SMVN32-4	7.5			
NVSS32-66-2		66	SMVN32-5-2	11			
NVSS32-72-2		72	SMVN32-5	11			
NVSS32-79-2		79	SMVN32-6-2	11			
NVSS32-86-2		86	SMVN32-6	11			
NVSS32-94-2		94	SMVN32-7-2	15			
NVSS32-102-2		102	SMVN32-7	15			
NVSS32-109-2		109	SMVN32-8-2	15			
NVSS32-115-2		115	SMVN32-8	15			
NVSS32-125-2	125	SMVN32-9-2	18.5				
NVSS32-132-2	132	SMVN32-9	18.5				
NVSS32-138-2	138	SMVN32-10-2	18.5				
NVSS45-16-2	90	16	SMVN45-1-1	3	2	Ø1000*2000	24L
NVSS45-19-2		19	SMVN45-1	4			
NVSS45-31-2		31	SMVN45-2-2	5.5			
NVSS45-38-2		38	SMVN45-2	7.5			
NVSS45-52-2		52	SMVN45-3-2	11			
NVSS45-59-2		59	SMVN45-3	11			
NVSS45-72-2		72	SMVN45-4-2	15			
NVSS45-80-2		80	SMVN45-4	15			
NVSS45-93-2		93	SMVN45-5-2	18.5			
NVSS45-101-2		101	SMVN45-5	18.5			
NVSS45-114-2		114	SMVN45-6-2	22			
NVSS45-122-2		122	SMVN45-6	22			
NVSS45-136-2		136	SMVN45-7-2	30			
NVSS60-14-2	120	14	SMVN64-1-1	4	2	Ø1000*2000	50L
NVSS60-22-2		22	SMVN64-1	5.5			
NVSS60-31-2		31	SMVN64-2-2	7.5			
NVSS60-39-2		39	SMVN64-2-1	11			
NVSS60-46-2		46	SMVN64-2	11			
NVSS60-55-2		55	SMVN64-3-2	15			



性能参数 Performance parameters

(2 Pumps)

设备型号 Type	系统流量 Capacity (m ³ /h)	扬程 Head (m)	水泵 Water pump			稳流罐 Steady flow tank	稳压罐 The surge tank
			型号 Type	功率 Power	台数 Stations		
NVSS60-63-2	120	63	SMVN64-3-1	15	2	Ø1000*2000	50L
NVSS60-71-2		71	SMVN64-3	18.5			
NVSS60-79-2		79	SMVN64-4-2	18.5			
NVSS60-88-2		88	SMVN64-4-1	22			
NVSS60-94-2		94	SMVN64-4	22			
NVSS60-106-2		106	SMVN64-5-2	30			
NVSS60-113-2		113	SMVN64-5-1	30			
NVSS60-120-2		120	SMVN64-5	30			
NVSS60-129-2		129	SMVN64-6-2	30			
NVSS60-137-2		137	SMVN64-6-1	37			
NVSS90-14-2	180	14	SMVN90-1-1	5.5	2	Ø1200*2400	50L
NVSS90-20-2		20	SMVN90-1	7.5			
NVSS90-30-2		30	SMVN90-2-2	11			
NVSS90-43-2		43	SMVN90-2	15			
NVSS90-52-2		52	SMVN90-3-2	18.5			
NVSS90-65-2		65	SMVN90-3	22			
NVSS90-76-2		76	SMVN90-4-2	30			
NVSS90-88-2		88	SMVN90-4	30			
NVSS90-98-2		98	SMVN90-5-2	37			
NVSS90-112-2		112	SMVN90-5	37			
NVSS90-123-2		126	SMVN90-6-2	45			
NVSS90-136-2		136	SMVN90-6	45			

(3 Pumps)

设备型号 Type	系统流量 Capacity (m ³ /h)	扬程 Head (m)	水泵 Water pump			稳流罐 Steady flow tank	稳压罐 The surge tank
			型号 Type	功率 Power	台数 Stations		
NVSS2-15-3	6	15	SMVN2-2	0.37	3	Ø600*1300	12L
NVSS2-22-3		22	SMVN2-3	0.37			
NVSS2-30-3		30	SMVN2-4	0.55			
NVSS2-37-3		37	SMVN2-5	0.55			
NVSS2-45-3		45	SMVN2-6	0.75			
NVSS2-52-3		52	SMVN2-7	0.75			
NVSS2-59-3		59	SMVN2-8	1.1			
NVSS2-67-3		67	SMVN2-9	1.1			
NVSS2-74-3		74	SMVN2-10	1.1			
NVSS2-82-3		82	SMVN2-11	1.1			
NVSS2-90-3		90	SMVN2-12	1.5			
NVSS2-98-3		98	SMVN2-13	1.5			
NVSS2-105-3		105	SMVN2-14	1.5			
NVSS2-112-3		112	SMVN2-15	1.5			
NVSS2-120-3		120	SMVN2-16	2.2			
NVSS2-128-3		128	SMVN2-17	2.2			
NVSS2-136-3		136	SMVN2-18	2.2			
NVSS4-15-3		12	15	SMVN4-2			
NVSS4-24-3	24		SMVN4-3	0.55			
NVSS4-32-3	32		SMVN4-4	0.75			
NVSS4-40-3	40		SMVN4-5	1.1			
NVSS4-48-3	48		SMVN4-6	1.1			



性能参数 Performance parameters

(3 Pumps)

设备型号 Type	系统流量 Capacity (m ³ /h)	扬程 Head (m)	水泵 Water pump			稳流罐 Steady flow tank	稳压罐 The surge tank
			型号 Type	功率 Power	台数 Stations		
NVSS4-56-3	12	56	SMVN4-7	1.5	3	Ø600*1300	12L
NVSS4-64-3		64	SMVN4-8	1.5			
NVSS4-72-3		72	SMVN4-9	2.2			
NVSS4-81-3		81	SMVN4-10	2.2			
NVSS4-88-3		88	SMVN4-11	2.2			
NVSS4-95-3		95	SMVN4-12	2.2			
NVSS4-103-3		103	SMVN4-13	3			
NVSS4-112-3		112	SMVN4-14	3			
NVSS4-120-3		120	SMVN4-15	3			
NVSS4-129-3		129	SMVN4-16	3			
NVSS4-137-3		137	SMVN4-17	4			
NVSS8-18-3		24	18	SMVN8-2			
NVSS8-28-3	28		SMVN8-3	1.1			
NVSS8-37-3	37		SMVN8-4	1.5			
NVSS8-46-3	46		SMVN8-5	2.2			
NVSS8-55-3	55		SMVN8-6	2.2			
NVSS8-64-3	64		SMVN8-7	3			
NVSS8-74-3	74		SMVN8-8	3			
NVSS8-83-3	83		SMVN8-9	4			
NVSS8-92-3	92		SMVN8-10	4			
NVSS8-101-3	101		SMVN8-11	4			
NVSS8-110-3	110		SMVN8-12	4			
NVSS8-119-3	119		SMVN8-13	5.5			
NVSS8-129-3	129		SMVN8-14	5.5			
NVSS8-138-3	138		SMVN8-15	5.5			
NVSS16-23-3	48		23	SMVN16-2	2.2	3	Ø800*1500
NVSS16-35-3		35	SMVN16-3	3			
NVSS16-47-3		47	SMVN16-4	4			
NVSS16-59-3		59	SMVN16-5	5.5			
NVSS16-70-3		70	SMVN16-6	5.5			
NVSS16-82-3		82	SMVN16-7	7.5			
NVSS16-94-3		94	SMVN16-8	7.5			
NVSS16-106-3		106	SMVN16-9	11			
NVSS16-118-3		118	SMVN16-10	11			
NVSS16-129-3		129	SMVN16-11	11			
NVSS20-9-3	60	9	SMVN20-1	1.1	3	Ø800*1500	24L
NVSS20-22-3		22	SMVN20-2	2.2			
NVSS20-35-3		35	SMVN20-3	4			
NVSS20-47-3		47	SMVN20-4	5.5			
NVSS20-59-3		59	SMVN20-5	5.5			
NVSS20-72-3		72	SMVN20-6	7.5			
NVSS20-83-3		83	SMVN20-7	7.5			
NVSS20-97-3		97	SMVN20-8	11			
NVSS20-120-3		120	SMVN20-10	11			
NVSS32-10-3		96	10	SMVN32-1-1			
NVSS32-13-3	13		SMVN32-1	2.2			
NVSS32-22-3	22		SMVN32-2-2	3			
NVSS32-28-3	28		SMVN32-2	4			
NVSS32-36-3	36		SMVN32-3-2	5.5			
NVSS32-42-3	42		SMVN32-3	5.5			
NVSS32-50-3	50		SMVN32-4-2	7.5			
NVSS32-56-3	56		SMVN32-4	7.5			



性能参数 Performance parameters

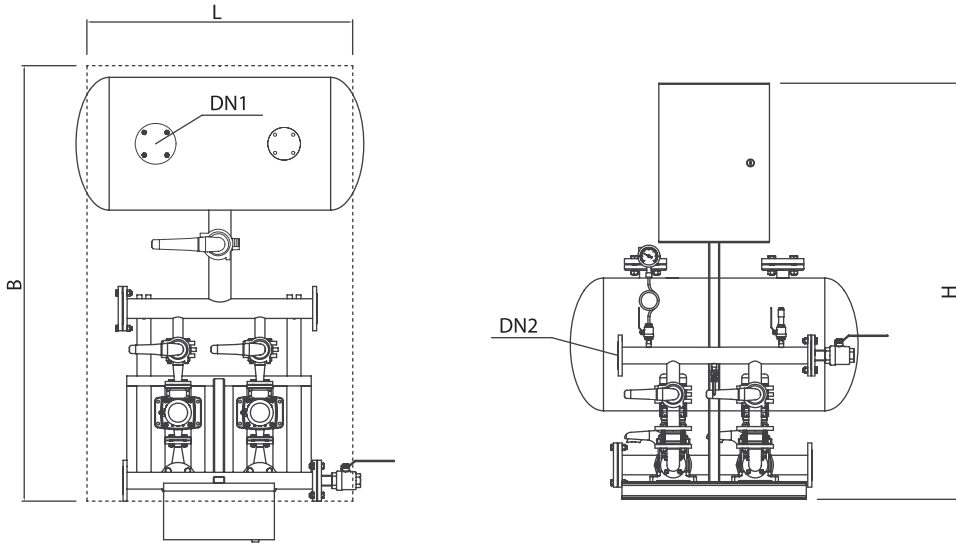
(3 Pumps)

设备型号 Type	系统流量 Capacity (m ³ /h)	扬程 Head (m)	水泵 Water pump			稳流罐 Steady flow tank	稳压罐 The surge tank
			型号 Type	功率 Power	台数 Stations		
NVSS32-66-3	96	66	SMVN32-5-2	11	3	Ø1000*2000	24L
NVSS32-72-3		72	SMVN32-5	11			
NVSS32-79-3		79	SMVN32-6-2	11			
NVSS32-86-3		86	SMVN32-6	11			
NVSS32-94-3		94	SMVN32-7-2	15			
NVSS32-102-3		102	SMVN32-7	15			
NVSS32-109-3		109	SMVN32-8-2	15			
NVSS32-115-3		115	SMVN32-8	15			
NVSS32-125-3		125	SMVN32-9-2	18.5			
NVSS32-132-3		132	SMVN32-9	18.5			
NVSS32-138-3		138	SMVN32-10-2	18.5			
NVSS45-16-3		135	16	SMVN45-1-1			
NVSS45-19-3	19		SMVN45-1	4			
NVSS45-31-3	31		SMVN45-2-2	5.5			
NVSS45-38-3	38		SMVN45-2	7.5			
NVSS45-52-3	52		SMVN45-3-2	11			
NVSS45-59-3	59		SMVN45-3	11			
NVSS45-72-3	72		SMVN45-4-2	15			
NVSS45-80-3	80		SMVN45-4	15			
NVSS45-93-3	93		SMVN45-5-2	18.5			
NVSS45-101-3	101		SMVN45-5	18.5			
NVSS45-114-3	114		SMVN45-6-2	22			
NVSS45-122-3	122		SMVN45-6	22			
NVSS45-136-3	136		SMVN45-7-2	30			
NVSS60-14-3	192		14	SMVN64-1-1	4	3	Ø1200*2400
NVSS60-22-3		22	SMVN64-1	5.5			
NVSS60-31-3		31	SMVN64-2-2	7.5			
NVSS60-39-3		39	SMVN64-2-1	11			
NVSS60-46-3		46	SMVN64-2	11			
NVSS60-55-3		55	SMVN64-3-2	15			
NVSS60-63-3		63	SMVN64-3-1	15			
NVSS60-71-3		71	SMVN64-3	18.5			
NVSS60-79-3		79	SMVN64-4-2	18.5			
NVSS60-88-3		88	SMVN64-4-1	22			
NVSS60-94-3		94	SMVN64-4	22			
NVSS60-106-3		106	SMVN64-5-2	30			
NVSS60-113-3		113	SMVN64-5-1	30			
NVSS60-120-3		120	SMVN64-5	30			
NVSS60-129-3	129	SMVN64-6-2	30				
NVSS60-137-3	137	SMVN64-6-1	37				
NVSS90-14-3	270	14	SMVN90-1-1	5.5	3	Ø1400*2500	80L
NVSS90-20-3		20	SMVN90-1	7.5			
NVSS90-30-3		30	SMVN90-2-2	11			
NVSS90-43-3		43	SMVN90-2	15			
NVSS90-52-3		52	SMVN90-3-2	18.5			
NVSS90-65-3		65	SMVN90-3	22			
NVSS90-76-3		76	SMVN90-4-2	30			
NVSS90-88-3		88	SMVN90-4	30			
NVSS90-98-3		98	SMVN90-5-2	37			
NVSS90-112-3		112	SMVN90-5	37			
NVSS90-123-3		126	SMVN90-6-2	45			
NVSS90-136-3		136	SMVN90-6	45			

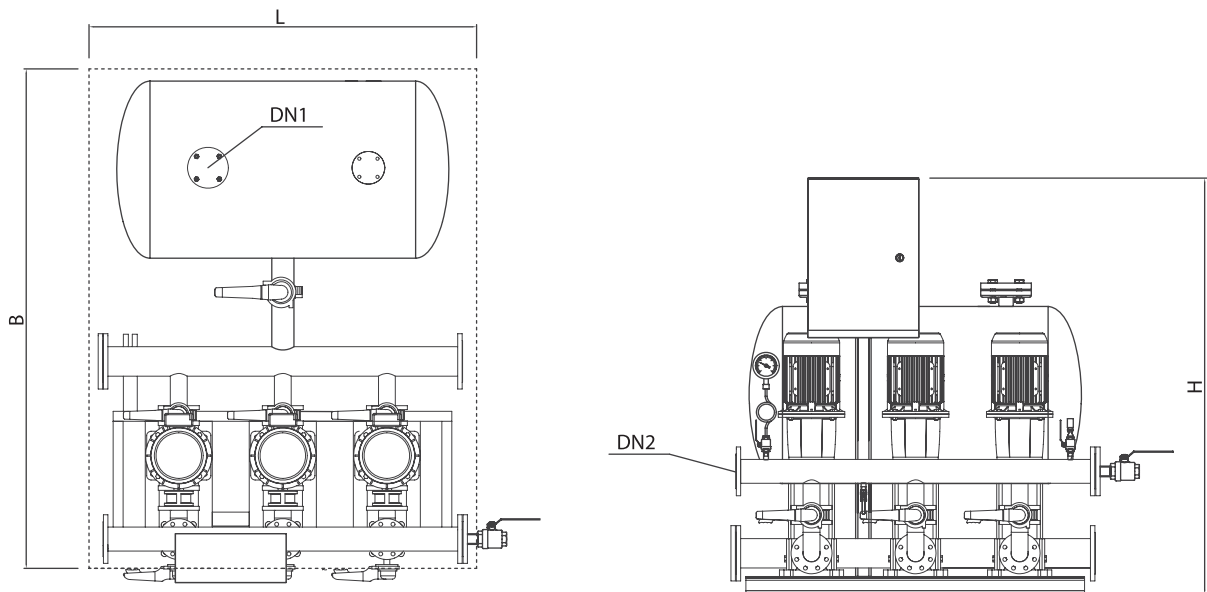


安装尺寸图 Installation dimensions

2 Pumps



3 Pumps



外形尺寸图 Installatin dimensions

(2 Pumps)

设备型号 Type	L (mm)	B (mm)	H (mm)	DN1	DN2
NVSS2-15-2	1300	1380	1120	50	40
NVSS2-22-2					
NVSS2-30-2					
NVSS2-37-2					
NVSS2-45-2					
NVSS2-52-2					
NVSS2-59-2					
NVSS2-67-2					
NVSS2-74-2					
NVSS2-82-2					
NVSS2-90-2					
NVSS2-98-2					
NVSS2-105-2					
NVSS2-112-2					
NVSS2-120-2					
NVSS2-128-2					
NVSS2-136-2					
NVSS4-15-2	1300	1380	1120	50	40
NVSS4-24-2					
NVSS4-32-2					
NVSS4-40-2					
NVSS4-48-2					
NVSS4-56-2					
NVSS4-64-2					
NVSS4-72-2					
NVSS4-81-2					
NVSS4-88-2					
NVSS4-95-2					
NVSS4-103-2					
NVSS4-112-2					
NVSS4-120-2					
NVSS4-129-2					
NVSS4-137-2					
NVSS8-18-2	1300	1420	1120	80	65
NVSS8-28-2					
NVSS8-37-2					
NVSS8-46-2					
NVSS8-55-2					
NVSS8-64-2					
NVSS8-74-2					
NVSS8-83-2					
NVSS8-92-2					
NVSS8-101-2					
NVSS8-110-2					
NVSS8-119-2					
NVSS8-129-2					
NVSS8-138-2					
NVSS16-23-2	1300	1440	1120	100	80
NVSS16-35-2					
NVSS16-47-2					
NVSS16-59-2					
NVSS16-70-2					



外形尺寸图 Installatin dimensions

(2 Pumps)

设备型号 Type	L (mm)	B (mm)	H (mm)	DN1	DN2
NVSS16-82-2	1300	1440	1120	100	80
NVSS16-94-2					
NVSS16-106-2					
NVSS16-118-2					
NVSS16-129-2					
NVSS20-9-2	1500	1750	1600	125	100
NVSS20-22-2					
NVSS20-35-2					
NVSS20-47-2					
NVSS20-59-2					
NVSS20-72-2					
NVSS20-83-2					
NVSS20-97-2					
NVSS20-120-2					
NVSS32-10-2					
NVSS32-13-2					
NVSS32-22-2					
NVSS32-28-2					
NVSS32-36-2					
NVSS32-42-2					
NVSS32-50-2					
NVSS32-56-2					
NVSS32-66-2					
NVSS32-72-2					
NVSS32-79-2					
NVSS32-86-2					
NVSS32-94-2					
NVSS32-102-2					
NVSS32-109-2					
NVSS32-115-2					
NVSS32-125-2					
NVSS32-132-2					
NVSS32-138-2					
NVSS45-16-2	2000	2000	1850	150	125
NVSS45-19-2					
NVSS45-31-2					
NVSS45-38-2					
NVSS45-52-2					
NVSS45-59-2					
NVSS45-72-2					
NVSS45-80-2					
NVSS45-93-2					
NVSS45-101-2					
NVSS45-114-2					
NVSS45-122-2					
NVSS45-136-2					
NVSS60-14-2	2000	2100	1850	200	150
NVSS60-22-2					
NVSS60-31-2					
NVSS60-39-2					
NVSS60-46-2					
NVSS60-55-2					



外形尺寸图 Installatin dimensions

(2 Pumps)

设备型号 Type	L (mm)	B (mm)	H (mm)	DN1	DN2
NVSS60-63-2	2000	2100	1850	200	150
NVSS60-71-2					
NVSS60-79-2					
NVSS60-88-2					
NVSS60-94-2					
NVSS60-106-2					
NVSS60-113-2					
NVSS60-120-2					
NVSS60-129-2					
NVSS60-137-2					
NVSS90-14-2	2400	2300	2200	200	150
NVSS90-20-2					
NVSS90-30-2					
NVSS90-43-2					
NVSS90-52-2					
NVSS90-65-2					
NVSS90-76-2					
NVSS90-88-2					
NVSS90-98-2					
NVSS90-112-2					
NVSS90-123-2					
NVSS90-136-2					

(3 Pumps)

设备型号 Type	L (mm)	B (mm)	H (mm)	DN1	DN2
NVSS2-15-3	1300	1380	1120	80	65
NVSS2-22-3					
NVSS2-30-3					
NVSS2-37-3					
NVSS2-45-3					
NVSS2-52-3					
NVSS2-59-3					
NVSS2-67-3					
NVSS2-74-3					
NVSS2-82-3					
NVSS2-90-3					
NVSS2-98-3					
NVSS2-105-3					
NVSS2-112-3					
NVSS2-120-3					
NVSS2-128-3					
NVSS2-136-3					
NVSS4-15-3	1300	1380	1120	80	65
NVSS4-24-3					
NVSS4-32-3					
NVSS4-40-3					
NVSS4-48-3					



外形尺寸图 Installatin dimensions

(3 Pumps)

设备型号 Type	L (mm)	B (mm)	H (mm)	DN1	DN2
NVSS4-56-3	1300	1380	1120	80	65
NVSS4-64-3					
NVSS4-72-3					
NVSS4-81-3					
NVSS4-88-3					
NVSS4-95-3					
NVSS4-103-3					
NVSS4-112-3					
NVSS4-120-3					
NVSS4-129-3					
NVSS4-137-3					
NVSS8-18-3					
NVSS8-28-3					
NVSS8-37-3					
NVSS8-46-3					
NVSS8-55-3					
NVSS8-64-3					
NVSS8-74-3					
NVSS8-83-3					
NVSS8-92-3					
NVSS8-101-3					
NVSS8-110-3					
NVSS8-119-3					
NVSS8-129-3					
NVSS8-138-3					
NVSS16-23-3	1500	1650	1600	100	80
NVSS16-35-3					
NVSS16-47-3					
NVSS16-59-3					
NVSS16-70-3					
NVSS16-82-3					
NVSS16-94-3					
NVSS16-106-3					
NVSS16-118-3					
NVSS16-129-3					
NVSS20-9-3					
NVSS20-22-3					
NVSS20-35-3					
NVSS20-47-3					
NVSS20-59-3					
NVSS20-72-3					
NVSS20-83-3					
NVSS20-97-3					
NVSS20-120-3					
NVSS32-10-3	2000	2075	1850	150	125
NVSS32-13-3					
NVSS32-22-3					
NVSS32-28-3					
NVSS32-36-3					
NVSS32-42-3					
NVSS32-50-3					
NVSS32-56-3					



外形尺寸图 Installatin dimensions

(3 Pumps)

设备型号 Type	L (mm)	B (mm)	H (mm)	DN1	DN2
NVSS32-66-3	2000	2075	1850	150	125
NVSS32-72-3					
NVSS32-79-3					
NVSS32-86-3					
NVSS32-94-3					
NVSS32-102-3					
NVSS32-109-3					
NVSS32-115-3					
NVSS32-125-3					
NVSS32-132-3					
NVSS32-138-3					
NVSS45-16-3					
NVSS45-19-3					
NVSS45-31-3					
NVSS45-38-3					
NVSS45-52-3					
NVSS45-59-3					
NVSS45-72-3					
NVSS45-80-3					
NVSS45-93-3					
NVSS45-101-3					
NVSS45-114-3					
NVSS45-122-3					
NVSS45-136-3					
NVSS60-14-3	2400	2350	2200	250	200
NVSS60-22-3					
NVSS60-31-3					
NVSS60-39-3					
NVSS60-46-3					
NVSS60-55-3					
NVSS60-63-3					
NVSS60-71-3					
NVSS60-79-3					
NVSS60-88-3					
NVSS60-94-3					
NVSS60-106-3					
NVSS60-113-3					
NVSS60-120-3					
NVSS60-129-3					
NVSS60-137-3					
NVSS90-14-3	2500	2550	2350	250	200
NVSS90-20-3					
NVSS90-30-3					
NVSS90-43-3					
NVSS90-52-3					
NVSS90-65-3					
NVSS90-76-3					
NVSS90-88-3					
NVSS90-98-3					
NVSS90-112-3					
NVSS90-123-3					
NVSS90-136-3					



欢迎索取以下产品型录



泵系列

- 潜水泵系列
- 陆上泵系列
- 特种泵系列
- 消防泵系列



搅拌推流系列

- 搅拌机系列
- 推流器系列



供氧曝气系列

- 曝气机系列
- 曝气盘系列
- 曝气管系列



风机系列

- 三叶罗茨鼓风机系列
- 增压罗茨鼓风机系列
- 沉水式风机系列



污泥处理设备 及其他

- 固液分离系列
- 泡药设备
- 输送设备



川源（中国）机械有限公司
GSD Industrial Co.,Ltd.

免费咨询电话

400-657-9066

本型录内容如有变更，恕不另行通知。
We reserve the right to change content without notice.

CY-G7

